

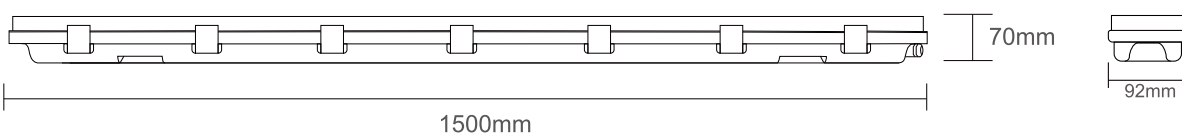
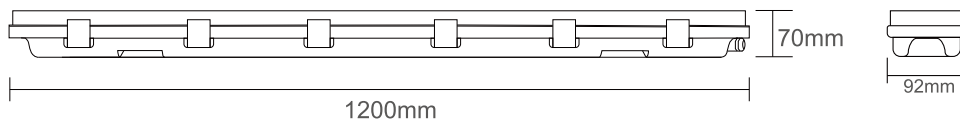
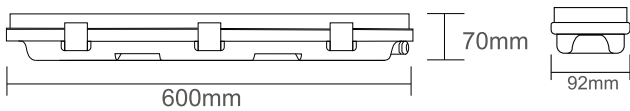
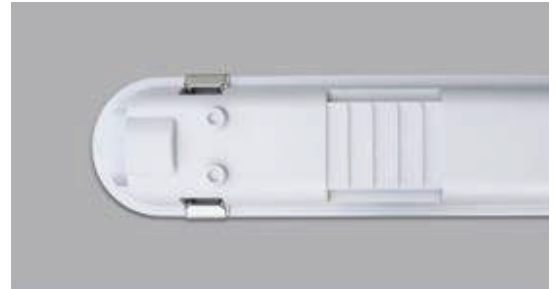
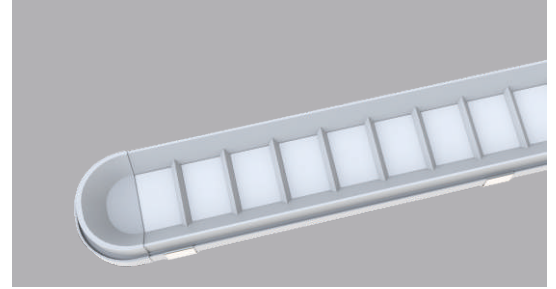
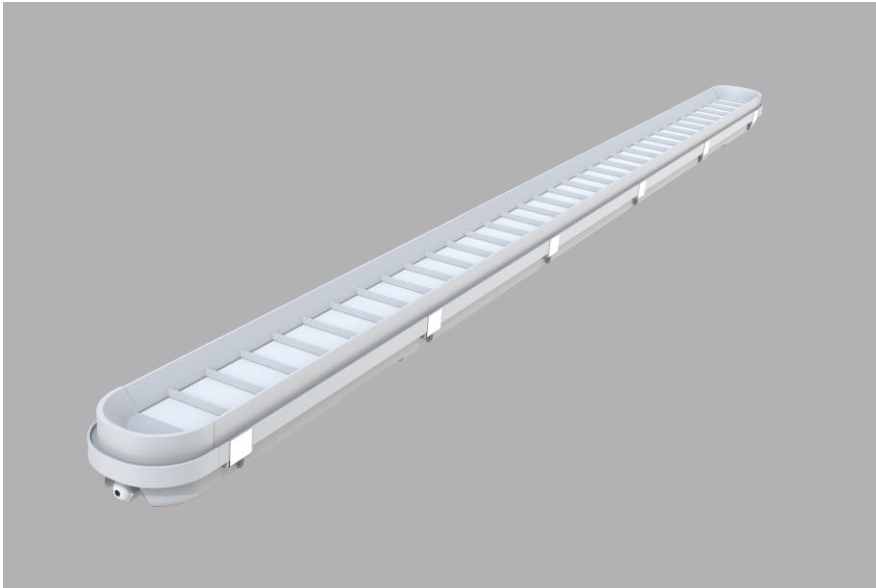


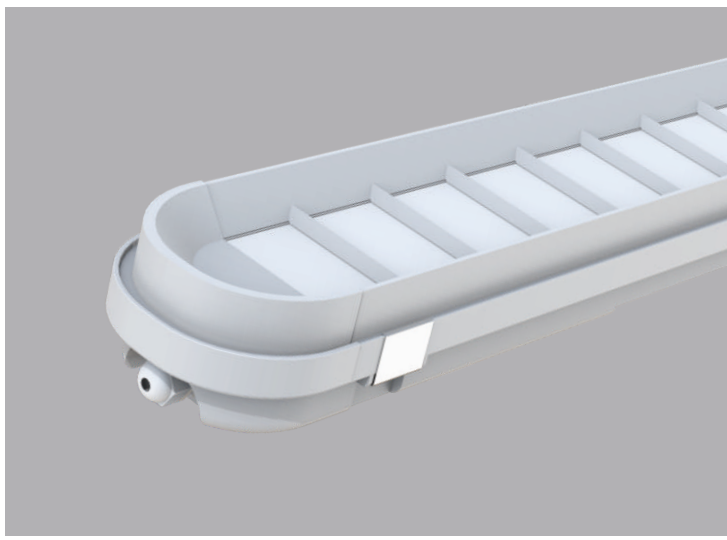
A-UNIQUE

ASIA UNIQUE LED LIGHTING CO., LTD

Low Glare IP65 Tri-Proof Light

AU11-TRIP Series





General Features:

- Four wattage selectable by switch before installation
- Tri-color selectable by dip switch available
- IP65 - Waterproof, Dustproof, Moisture-proof
- High Lumen Efficiency 110LM/W
- Flicker free driver
- Full PCB board and the diffuser is a whole part, no need to take the PCB apart but wire directly, much easier than the normal design
- Cables can be from the back or the two ends of the light, easy wiring
- Easy clips, one step assembly
- With Safety cables, free your hands during the installation
- Can be Surface Mount or Suspension Mount
- Can be linked from one to another
- UKCA, CE, RoHS, SAA & C-tick approved
- Sensor & Emergency versions available
- Triac Dimming, 1-10V Dimming & Dali Dimming available
- Low UGR<19

Technical Specifications

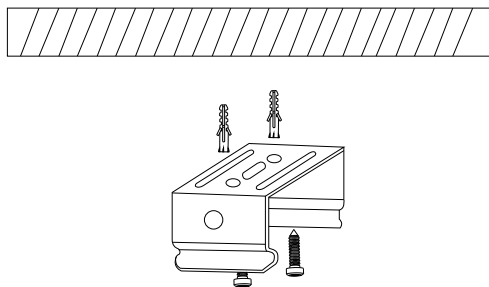
Model No.	AU11-TRIP202F	AU11-TRIP404F	AU11-TRIP505F
Dimension(mm)	600*92*70	1200*92*70	1500*92*70
Cutout(mm)	/	/	/
Wattage(w)	12W-14W-16W- 20W	20W-26W- 30W-36W	26W-32W-40W-46W
Input Voltage(v)	AC200~240V		
Light Source	SMD2835		
SDCM	<6		
CCT(K)	2700K/3000K/4000K/5000K/5700K/6500K		
	3000K-4000K-6500K		
CRI	>80		
Lumen (lm)±5%	1320-2200	2200-3960	2860-5060
Flicker free	Available		
Beam Angle(°)	90°		
Dimming option	Non-dimmable, Flicker Free		
Sensor option	Available		
Emergency Kits	Available		
Protection Class	Class I		
UGR	<19		
Degree of protection(IP)	IP65		
Impact Resistance(IK)	IK08		
Material	Brackets	Stainless steel	
	Heatsink	PC	
	Diffuser	PC	
L70	54000Hrs		
Glow Wire Test(°C)	650°C		
Operation Temp.(°C)	-20~ 45°C		
Installation	Surface Mount / Suspension Mount		
Certificates	UKCA, CE, Rohs, SAA & C-tick		
Warranty	3 Years		

Packing information

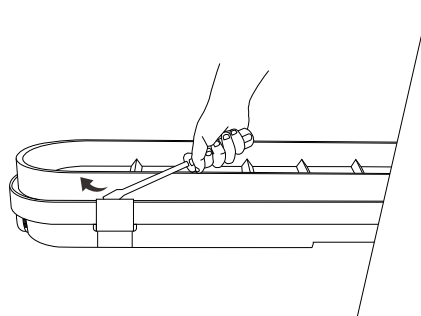
Model Number	Weight/Luminaire (kg)	QTY/BOX (pcs)	Inner Box Size (mm)	Weight/Box (kg)	QTY/CTN (pcs)	Carton Size (cm)	Weight/CTN (kg)	QTY/20GP (PCS)	QTY/40GP (PCS)	QTY/40HP (PCS)
AU11-TRIP202F	1.20	1	660*100*90	1.40	9	68*32*29	12	4437	9144	10287
AU11-TRIP404F	2.00	1	1260*100*90	2.25	9	128*32*29	20	2232	4689	5364
AU11-TRIP505F	2.20	1	1560*100*90	2.50	9	158*32*29	21.5	1800	3789	4311

Installation Instructions

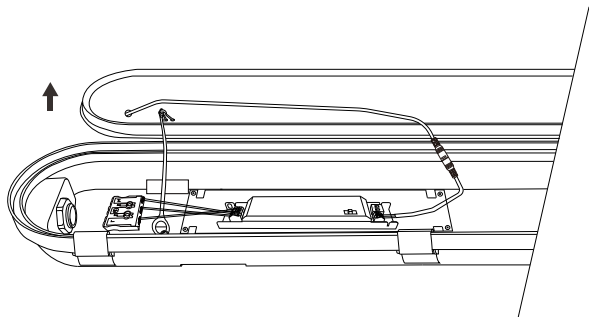
1. Drill holes and insert plastic dowel into the holes, fix the mounting bracket with provided screws.



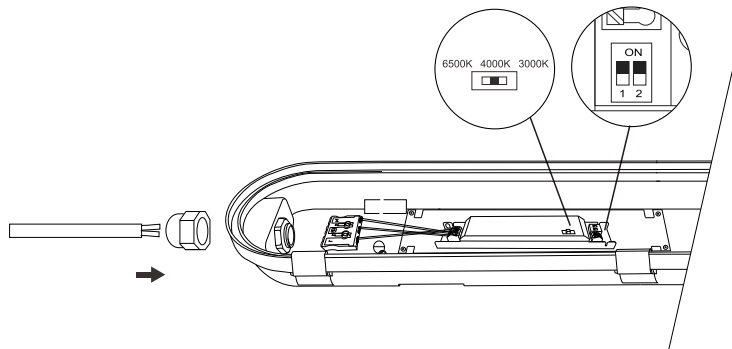
2. Open the clips with screw driver.



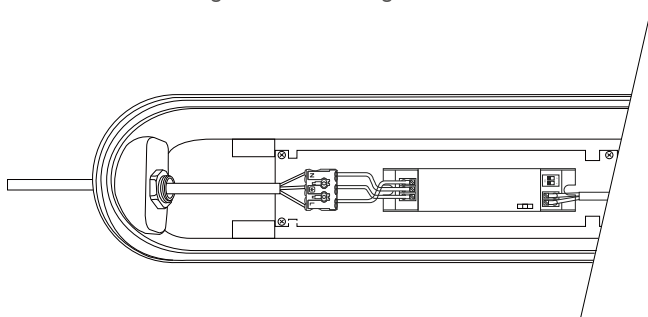
3. Remove the cover from the housing base



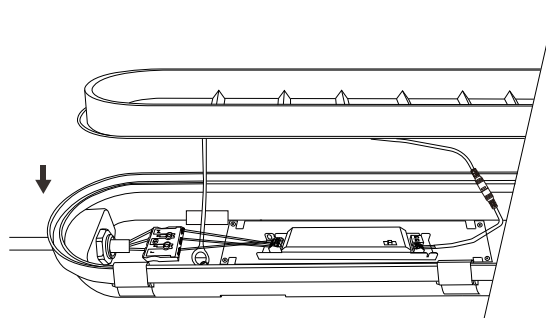
4. Loosen the cable gland and insert the power cable through the cable gland. Select the required wattage&CCT via switch



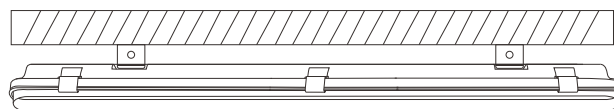
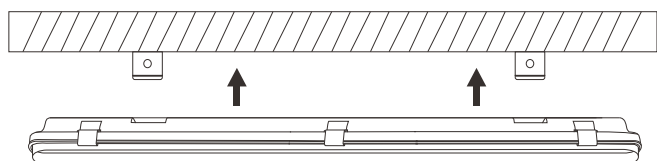
5. Connect the power cable to the driver and tighten the cable gland.



6. Reattach the cover and fasten the clips



7. Mount the fixture on the ceiling / wall



Please Note:

- *Product must be installed by licensed electrician.
- *Disconnect or turn off the power before installation.
- *Verify the supply Voltage is the same as rated luminaire voltage.

Packing List (each inner box)

Tri-proof light	1pcs
Screw	4pcs
Brackets	2pcs

Applications:

- Parking lots
- Warehouses
- Factories
- Tunnels
- basements
- Lofts
- balcony
- Car washing station

Installation caution

- Product must be installed by licensed electrician.
- Disconnect or turn off the power before installation.
- Verify the supply Voltage is the same as rated luminaire voltage.

Application:

